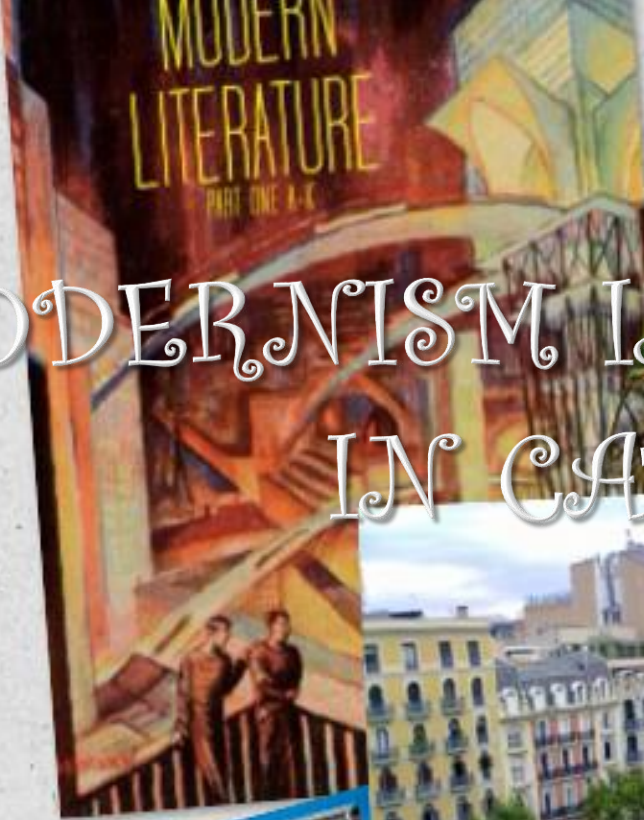


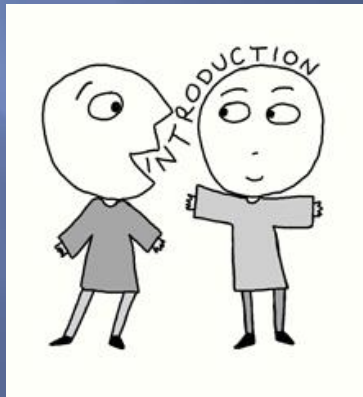
MODERNISM IN ENGLAND AND IN CATALONIA

Jasmine Lara MERCADO
Cristine Paula MARQUEZ
Mohamed SULMAN
Shazad



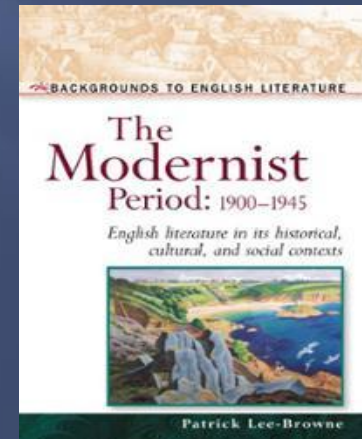
INTRODUCTION

- ▣ We investigated about modernism in England and Catalonia. Their differences and similarities and the works of some famous modernists. We also searched the name modernism in other European countries. We learned about works of Gaudi and through pictures we are going to show you some of his works, his relation with Eusebi Güell and his connection with Shakespeare's work.



WHAT IS MODERNISM?

- ❑ Modernism is a movement with cultural trends and changes in the late 19th and early 20th centuries.
- ❑ It includes the activities and creations of art, architecture, literature, religious faith, philosophy, activities of daily life, and even the sciences, social, and political environment of an industrialized world. Modernists were not interested in the present day but they make use of the works of the past



MODERNISM IN EUROPE

- ❑ Modernism was first evolved in Europe around the 20th century
- ❑ It is equivalent to a number of other end of the century art movements with the names of

Arts and Crafts

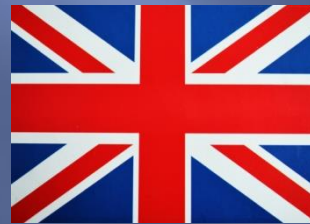
Art Nouveau

Jugendstil

Sezession

Liberty style

Modern or Glasgow Style



MODERNISM IN CATALONIA



Josep Llimona

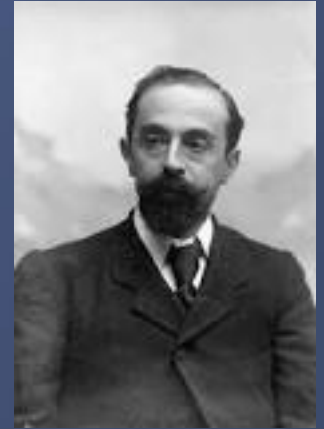
Ramon Casas



Santiago Rusiñol

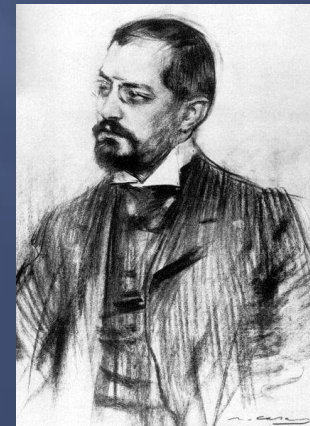
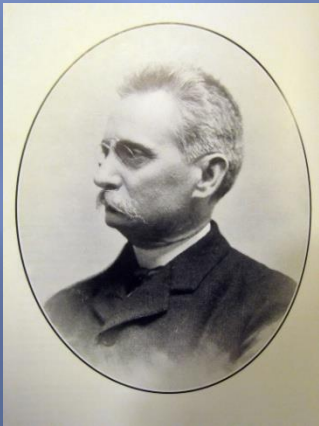


MODERNISM IN BARCELONA



Antoni Gaudi

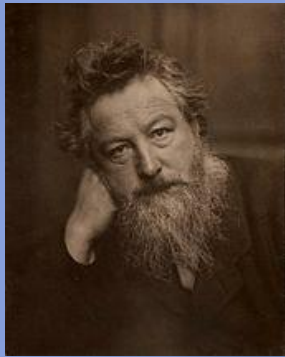
Joan Maragall



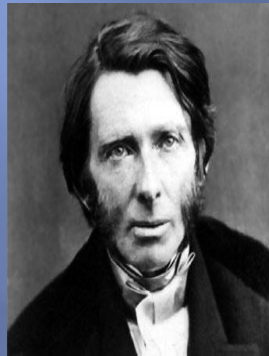
Lluís Domenech i Montaner

Josep Puig i Cadafach

MODERNISM IN ENGLAND



J. Ruskin



W. Morris



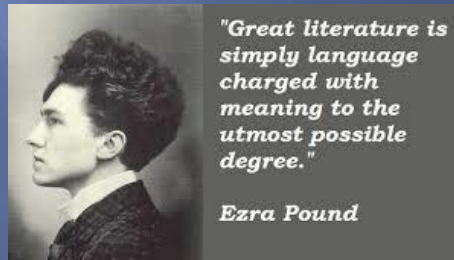
Dante
Gabriel
Rossetti



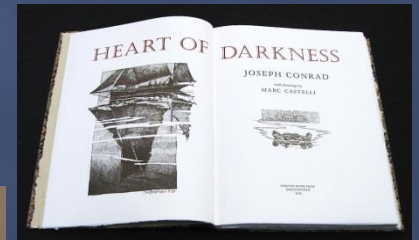
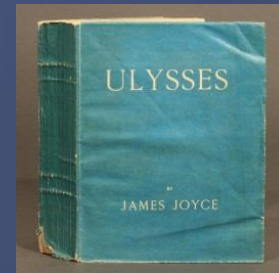
P. Brotherhood



T. S Eliot



Ezra Pound



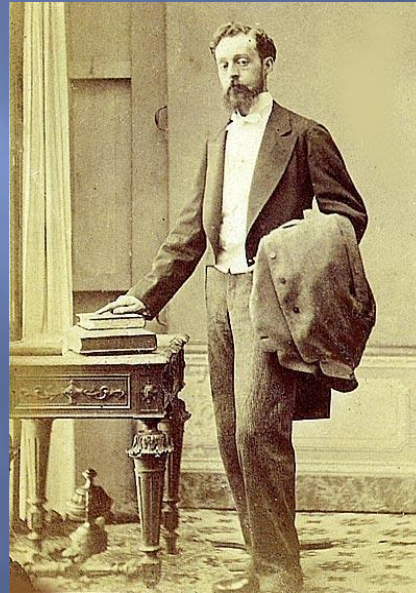
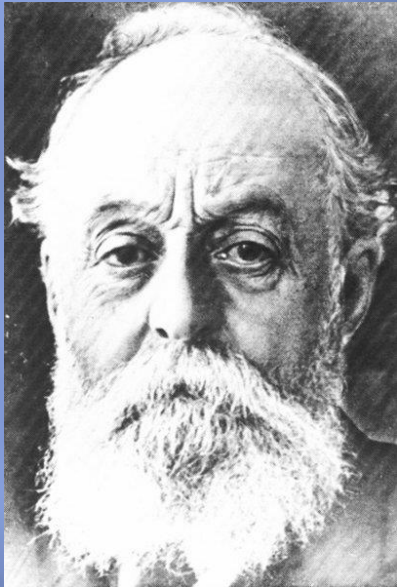
CATALONIA AND BRITAIN

- ❑ Glasgow is the center of British Modernism. Glasgow School is important for their simplicity. It was dominated by a combination of simple decorated geometric forms and some human and plant forms.
- ❑ On the other hand Catalonia reviewed the history and its own traditions from a society that wants to be modern and cosmopolitan. In the 1890s, architects and decorators relive the past with a medieval flavor.

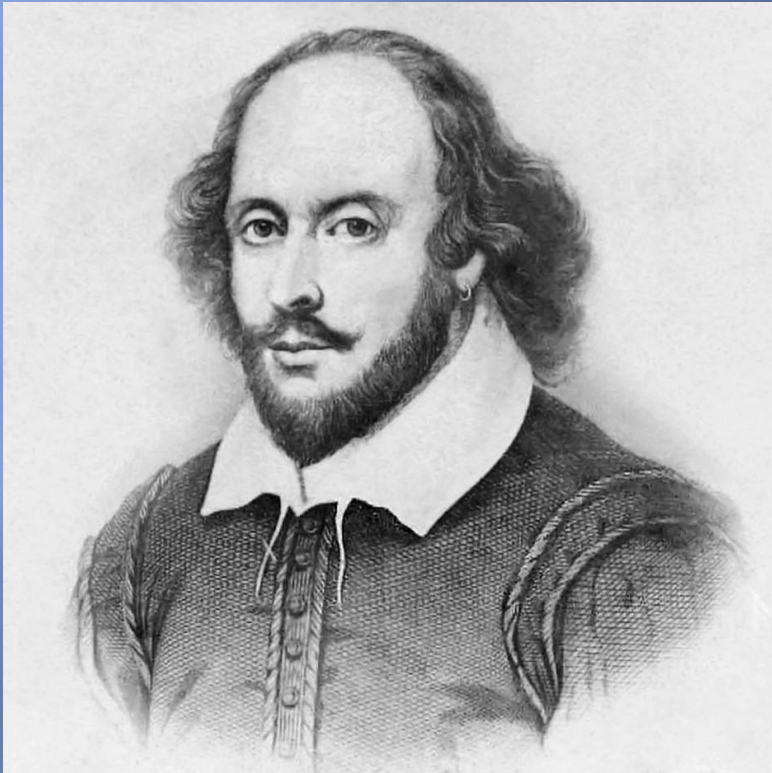
England → Europe → Catalonia → Barcelona
(E.Güell – A.Gaudi)

(translate the old English texts of Shakespeare)

EUSEBI GÜELL



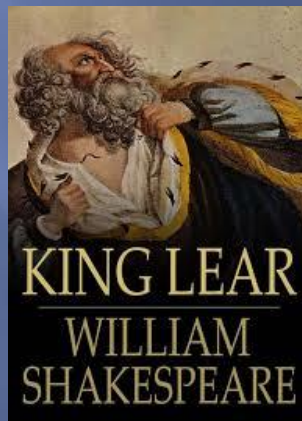
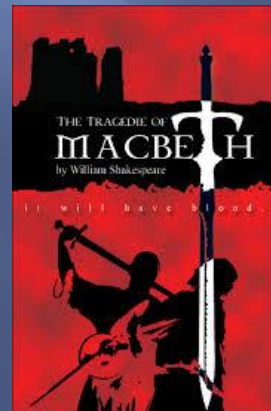
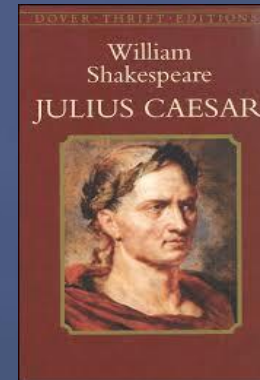
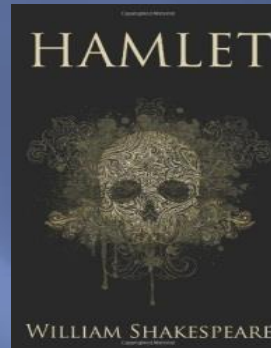
WILLIAM SHAKESPEARE



He works as a playwright, poet and an actor. He died when he was 52 years old. He was born in Stratford-upon-Avon, UK and died there.

SHAKESPEARE'S WORKS

- ▣ -Hamlet
- ▣ -Macbeth
- ▣ -Julius Caesar
- ▣ -Romeo and Juliet
- ▣ -King Lear



RELATION BETWEEN GUÉLL AND SHAKESPEARE

- The Catalans in the Renaissance translated works of Shakespeare in Catalan. So in social cultural and literary texts, Shakespeare was a recovered figure. Eusebi Güell loved those kind of activities that make the Catalan identity and since that moment they started translating Shakespeare's work. Eusebi had something to do with William Shakespeare's work. Güell was a very rich, religious and smart man and he had a lot of taste. That's why there are works of Shakespeare in his stained glass windows which can show the visitors the way he is.



OUR STAINED GLASS "ROMEO & JULIET"



CONCLUSIONS

CONCLUSION

We learned a lot about Modernism especially “Modernisme” which is in Barcelona. We also know more information about Gaudi’s work. We have in mind some important architects and we also learned that Modernism is not only about architecture but also is in art and literature, etc. We learned more about the relation of Gaudi and Eusebi Güell because of the visit in Palau Güell, which is a very interesting place to visit. We learned some of Shakespeare’s work and we also read some fragments of it.





That's all Folks!
Any Question?